



## **The importance of volunteer civil protection and defense agents in reporting accidents and disasters: A case study of the mapping of occurrences in Nova Iguaçu-RJ**

**10.56238/isevmjv3n3-001**

Receipt of originals: 04/18/2024

Acceptance for publication: 05/08/2024

### **Claudia Avelar Barboza Lima Moura**

Lattes: 0615716534312101

Municipal Secretariat of Civil Defense of Nova Iguaçu/ Community Protection - SuPC/SMDC  
Postgraduate student in Occupational Safety and Communication Management - Faculdade  
Educaminas

Lattes: avelarblm@gmail.com

### **Lucas Onofre Costa**

Lattes: 3675991445436518

Municipal Secretariat of Civil Defense of Nova Iguaçu/ Meteorology  
Undergraduate student in Geography-UFRRJ/ IM

Lattes: lucasonofre@ufrj.br

### **Sebastião dos Reis Soares Filho**

Lattes: 5944535162339052

Post Graduate in Environmental Management and Education - UERJ  
NUPDEC AMAT TINGUÁ

Lattes: srs.adv@gmail.com

### **Zaire Januzzi Veloso Beck**

Lattes: 3721157076172487

Post-Graduation in Civil Liability – Faculdade Estácio de Sá  
MPRJ

Lattes: zildajanuzzi@hotmail.com

### **Miriana Hilcenko**

Lattes: 7253712876848110

Nova Iguaçu Health Department Specialist in Homeopathic Pharmacotechnics – Hahnemannian  
Institute of Brazil / IHB

Lattes: mirianahil@gmail.com

### **Lucilene Almeida de Souza**

Lattes: 0725843287725868

Nova Iguaçu Health Department Post-Graduation in Specialization in Health and Clinical  
Management in the Metropolitan Health Care Networks

Emphasis: "Maternal and Child" / Sírío Libanês Institute of Teaching and Research.

Lattes: lucilene\_las@yahoo.com.br

### **Victoria Clem Belchior dos Santos**

Lattes: 7662877604282209

Agricultural and Environmental Engineer with a postgraduate degree in ESG and Corporate  
Sustainability - Unopar



NUPDEC AMAT TINGUÁ  
Lattes: vitoriaclem@gmail.com

**Alexandre Luís Belchior Dos Santos**

Lattes: 6442571977328854

Ecopreserve Institute Doctorate in Education Sciences at the Inter-American Association of Social Sciences- Paraguay  
E-mail: abelchior.unr@gmail.com

## **ABSTRACT**

This article presents the benefits of a tool that trains volunteers who support the Municipal Coordination of Protection and Civil Defense, working in risk reduction and accident and disaster management. The research focused on the study of the role of volunteering in civil protection and defense in Brazil, identifying the type of disaster, by neighborhoods, most relevant in the municipality of Nova Iguaçu, which caused the greatest damage and losses: floods and floods. In addition, the relevance of the trained volunteer and the performance of the Training Center for Emergencies and Disasters in the training and preparation of volunteers for a more technical view were considered. The research methodology was qualitative, with the researchers analyzing the information, actions and activities listed, to obtain data on practical actions, involving the community target audience. The information was of paramount importance for the elaboration of the map and for its maintenance through the reports of the volunteer agents of the NUPDECs, who were in the affected communities. It is positive to conclude on the relevance of the created tool, despite the difficulties in obtaining data for its elaboration, which were overcome with the partnership of several actors involved.

**Keywords:** Volunteer, Emergency Training Center, Civil Protection and Defense, NUPDEC.

## **1 INTRODUCTION**

### **1.1 PROBLEMATIZATION**

What is the importance of the participation of volunteer agents in providing, in real time, information about accidents and disasters?

### **1.2 OBJECTIVE**

Present the advantages, when information on adverse events is passed on, in real time, by volunteer agents to a Municipal Coordination of Protection and Civil Defense (COMPDEC), to reduce the risks of accidents and disasters.

### **1.3 METHODOLOGY**

A case study was carried out, according to Yin (2015), with the Civil Protection and Defense Centers (NUPDECs), formed by groups of individuals and legal entities, which support



the Municipal Secretariat of Civil Defense of the Municipality of Nova Iguaçu, in order to deepen the knowledge about the reduction of disaster risks, as well as in the responses to accidents and disasters, especially natural disasters (Brasil, 2022), which, in 2024, affected the municipality during the seasonal rains in February and March. The Municipal Secretariat of Civil Defense of Nova Iguaçu prepared a mapping of events and set up a tool, translated by a map of accident and disaster points, informed by the members of the NUPDECs, according to the geographic information system GIS, by neighborhoods that were affected, in order to base their response planning on minimizing suffering, damages and losses to the society of the municipality. The map was made available to the Network/SVAC, from where by the inductive method, data were analyzed and discussed with the produced tool.

## **2 THE CIVIL PROTECTION AND DEFENSE CENTERS (NUPDECs) THE TRAINING CENTER FOR EMERGENCIES AND DISASTERS (CETRED)**

The Civil Protection and Defense Centers (NUPDECs) and the Training Center for Emergencies and Disasters (CETRED), are institutional tools established to qualify and train volunteers, including, among others, community leaders, residents' associations and governmental and non-governmental representatives, working to provide free courses and seminars in order to meet various aspects of emergencies and disasters.

Volunteering, based on Federal Law 9.608/98 (Brasil, 1998), can be defined as a "voluntary service" and thus as unpaid activities, where an individual has or employs his workforce with an altruistic objective, restricting this service in favor of a non-profit legal entity of public or private law (Reis, 2022).

Generally, the volunteer's link with the Civil Defense takes place through the so-called Civil Protection and Defense Centers (NUPDECs), which was based on Federal Decree 5,376/2005 and Resolution No. 2, of December 12, 1994, of the National Civil Defense Council, which instituted the National Civil Defense Policy. The following National Policy for Civil Protection and Defense (PNPDEC), Brazil (2012,) does not expressly mention the term "NUPDEC", however it mentions voluntary associations when it assigns powers to municipalities to encourage participation and promote the training of voluntary associations (Law 12.608 of April 10, 2012. Art. 8, XV).

In Nova Iguaçu, in the State of Rio de Janeiro, CETRED, created based on Rio de Janeiro (2020), has been seeking to involve all members of society and the Public Power, unifying all citizens of the municipality, towards a common goal focused on disaster risk reduction (DRR) and



support for the management of responses to accidents and disasters (Cetred, 2023).

Thus reiterating that the survey was carried out in February 2024, based on the current legal norms: Law 12,608 of April 10, 2012, Brazil (2012), Federal Law 14,750 of December 12, 2023, Brazil (2023) and RJ State Decree No. 46,935/20, in articles 4 XIV and 8 I, Art.14o VIII, Rio de Janeiro (2020), which establish guidelines for the participation of civil society and the prioritization of preventive actions aimed at minimizing disasters.

Communication is a crucial and conditioning factor for the execution of work, in the context of prevention, mitigation, preparation, response and recovery, as it is the condition that articulates actions, it is the channel in which orders are manifested and acts on the territory are articulated.

The importance of the community in the pre-disaster and post-disaster is crucial, the support for initiatives, the training and training of volunteer agents for civil protection and defense creates a culture of prevention, making the community, as a whole, more resilient. People, previously prepared, face adverse situations with a different look, being able to act in the notification and communication with the Protection and Civil Defense Agencies during the occurrence of rains, floods and landslides and in the dry season, inform and communicate about forest fires, whether in urban or rural areas, especially in Nova Iguaçu, a municipality that, according to MAPBIOMAS (2024), has a vegetation cover with a large percentage of its territory under vegetation cover, distributed by conservation units (CU) of full protection and conservation unit of sustainable use (Brasil, 2000).

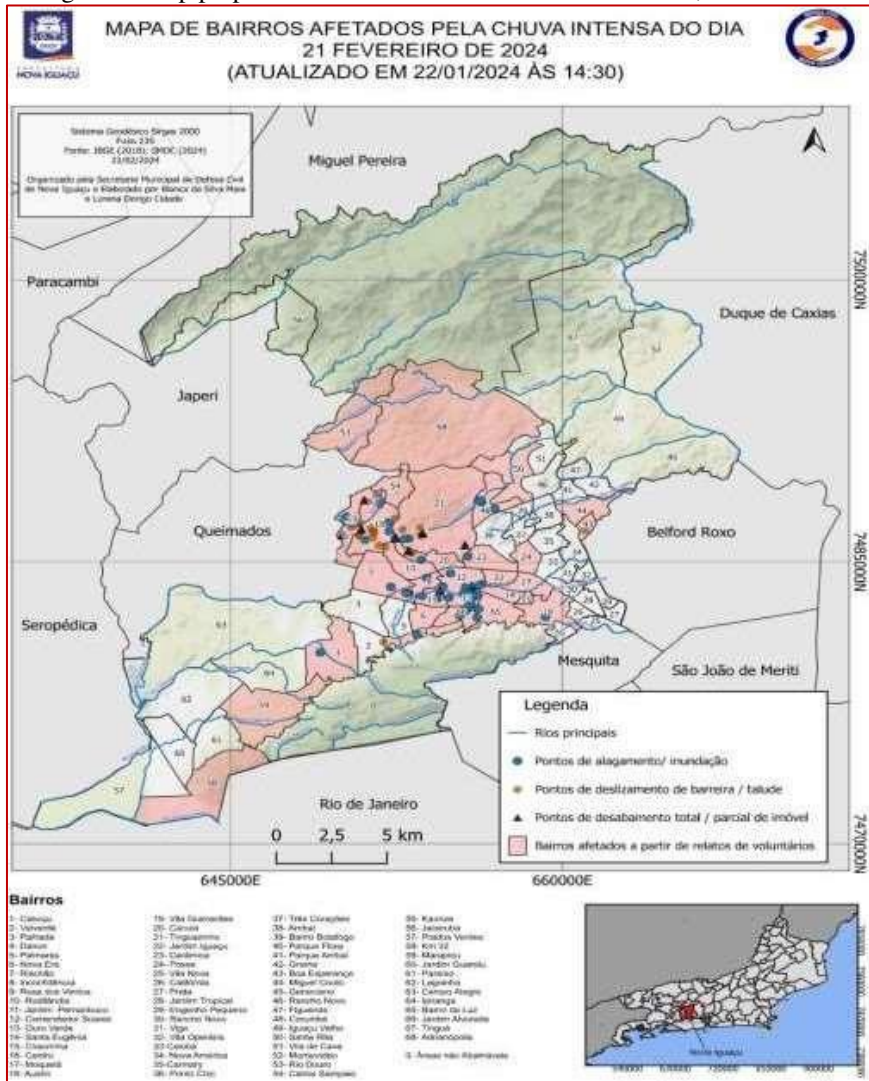
The purpose of the research in question is to report the importance and role of this channel with the volunteer, as a collection of reliable information, through the report of a series of locations, in order to create a list of affected neighborhoods for the preparation of a map with a visualization legend, easy to understand, whose reading, through the QGIS geographical map, will indicate the neighborhoods that were affected by the rains in February 2024, using as a source of information and communication the data indicated by public agents and, above all, by civil protection and defense volunteers, from the Civil Protection and Defense Centers (NUPDECs).

It should be noted that the volunteer agents of the NUPDECs are officially recognized and their members are registered in the Municipal Network of Servers, Volunteers and Friends of the Community (REDE/SVAC, 2010), formed by employees, volunteers and friends of the community.

### **3 DATA COLLECTION AND ANALYSIS**

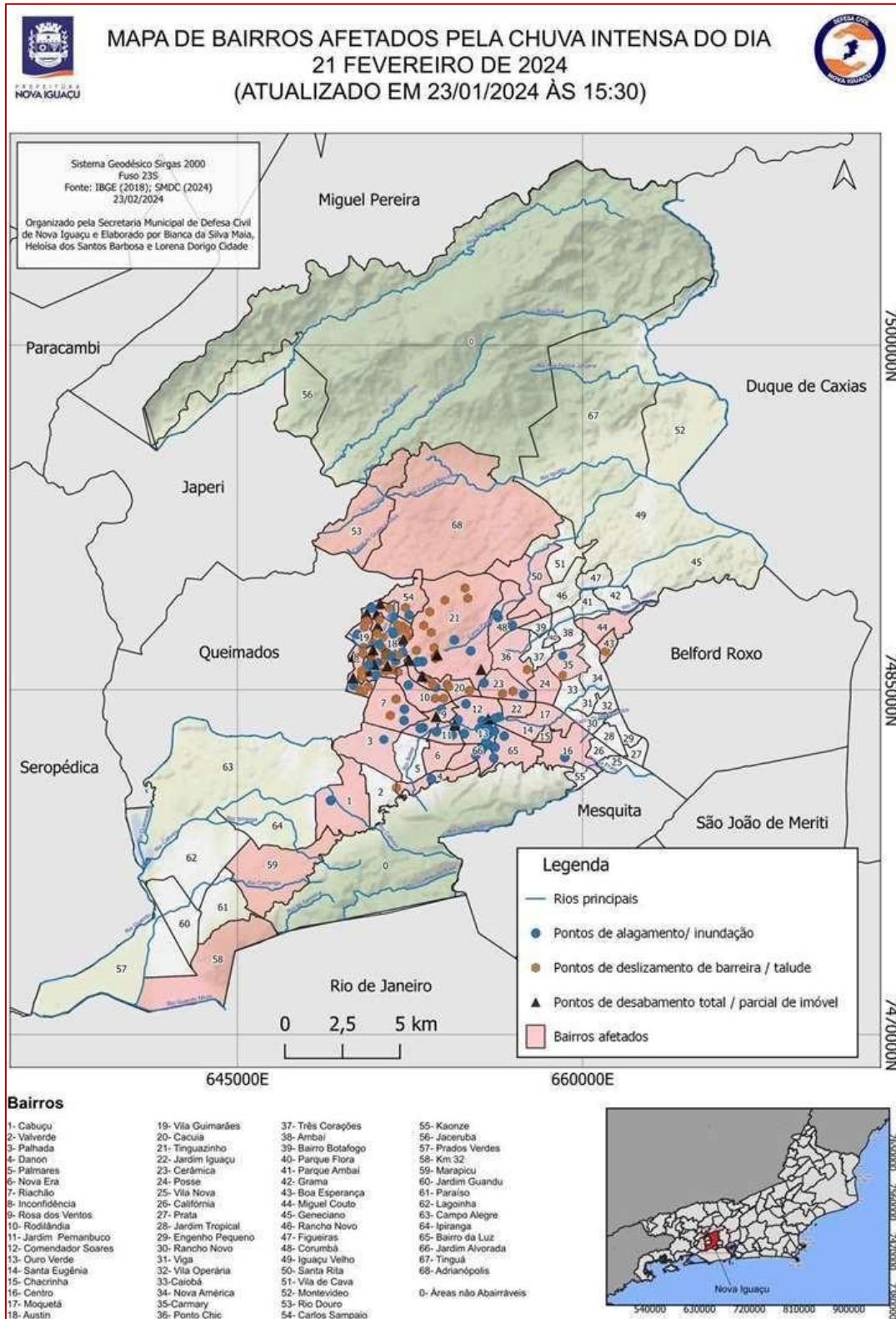
The data collected are described in the maps in Figure 1 and Figure 2, where the authors of this article participated, sometimes as public agents, sometimes as volunteer agents of protection and civil defense and went on to the analysis and discussion of the data, which are present in the respective legends of each map, where the following are analyzed and verified: the bases and technical sources of the maps; the distribution and totalization of neighborhoods in the municipalities; the municipalities that surround the Municipality of Nova Iguaçu and that border it and also the main fluvial description of the rivers that make up the Hydrographic Basins of the Region; flooding/flooding points; barrier/slope slip points; points of total/partial collapse of property; and above all, the affected neighborhoods based on reports from volunteers.

Figure 1: Map prepared with data from NUPDECs and others, on 02/21/24.



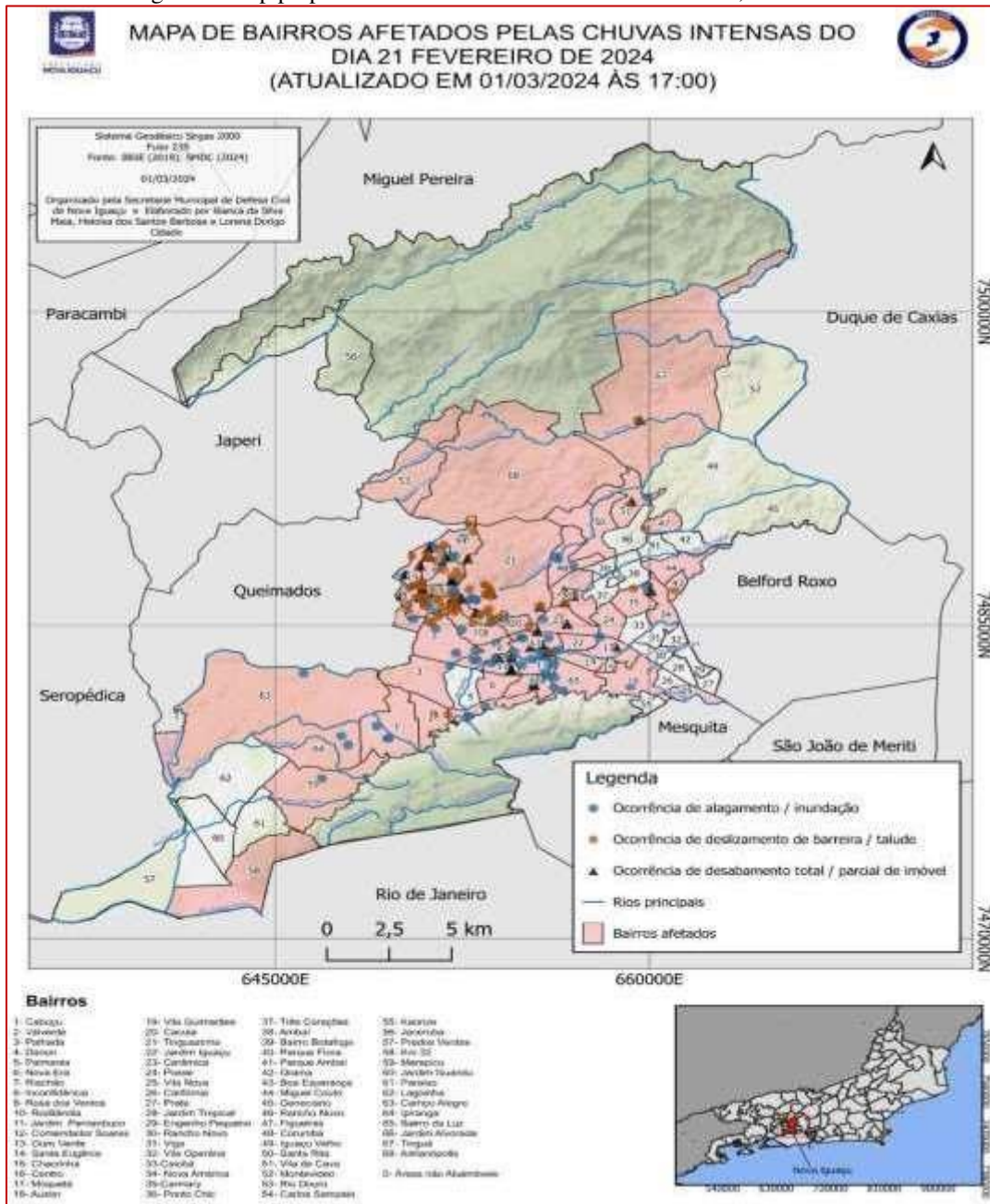
Source: Municipal Secretariat of Civil Defense of Nova Iguaçu - SMDC (2024)

Figure 2: Map prepared with data from NUPDECs and others, on 02/21/24.



Source: Municipal Secretariat of Civil Defense of Nova Iguaçu - SMDC (2024)

Figure 3: Map prepared with data from NUPDECs and others, on 02/21/24.



Source: Municipal Secretariat of Civil Defense of Nova Iguaçu - SMDC (2024)

#### 4 RESULTS AND DISCUSSION

The Civil Defense Secretariat of Nova Iguaçu allowed the disclosure of the data used in the academic article. Permission was granted on the condition that the data be used exclusively for academic purposes.

The article in question presents an unprecedented analysis of the Civil Defense data, which means that the information was used in a different and original way. This analysis contributes to the improvement of knowledge about the dangers and disasters in the region of Nova Iguaçu.

Located in the Baixada Fluminense region of Rio de Janeiro, Nova Iguaçu stands out for



being a relevant urban center in constant growth. With approximately 785,867 inhabitants (IBGE data from 2022), the municipality is the second most populated in the state, behind only the capital.

To make the administration of the city of Nova Iguaçu more effective, it is divided into 9 (nine) Regional Government Units (URGs), each with its own peculiarities and characteristics. The following is a complete summary of each URG, with its 68 sub-neighborhoods:

URG 1 Centro – Bairro da Luz, California, Caonze (K11), Chacrinha, Engenho Pequeno, Jardim Iguaçu, Jardim Tropical, Moquetá, Prata, Rancho Novo, Santa Eugênia, Viga, Vila Nova, Vila Operária.

- URG 2 Posse – Ambaí, Bairro Botafogo, Carmary, Cerâmica, Kennedy, Nova América, Parque Flora, Ponto Chic, Três Corações.
- URG 3 Comendador Soares – Danon, Jardim Alvorada, Jardim Nova Era, Jardim Palmares, Jardim Pernambuco, Ouro Verde, Rosa dos Ventos.
- URG 4 Cabuçú – Campo Alegre, Ipiranga, Lagoinha, Marapicu, Palhada, Val-verde
- URG 5 KM32 – Jardim Guandu, Paraíso, Prados Verdes.
- URG 6 Austin – Cacuia, Carlos Sampaio, Inconfidência, Riachão, Rodilândia, Tinguazinho, Vila Guimarães.
- URG 7 Vila de Cava – Corumbá. Figueira, Iguaçu Velho, Rancho Fundo, Santa Rita.
- URG 8 Miguel Couto – Boa Esperança, Gerenciano, Grama, Miguel Couto, Ambaí Park.
- URG 9 Tinguá – Adrianópolis, Jaceruba, Montevideo, Rio D'Ouro.

It should be noted that in the period chosen for study, the disaster was caused by heavy rains that occurred from Wednesday night (02/21/2024). All neighborhoods, characterized as urban or rural areas contained in the URGs, suffered in a certain way from the extreme event. More precisely, there were 41 neighborhoods affected by heavy rains in relation to the total number of 68 neighborhoods. Of these, 25 neighborhoods are bordering other municipalities, which suffered from the same event.

During the event, through the communication and contribution of volunteers, we identified the needs of the 26 neighborhoods that were most affected. With this information, collected in real time from the volunteers, it was possible to create a map, as shown in figure 03.

Figure 1, which represents the beginning of the event, offers an initial idea of the situation.



However, it is in Figures 2 and 3 that the power of real-time information is revealed. Figure 2, obtained during the event, shows a significant increase in community and volunteer participation. This engagement, motivated by the urgency of accurate information, has made it possible to identify new affected areas, critical flood points and a growing demand for assistance.

Figure 3, which shows the last update and the end of the event, reinforces the importance of real-time information. With the participation of volunteers, it was possible to accurately map the affected areas, assess the damage and direct recovery efforts more efficiently.

Volunteering is more than collecting real-time data. Its work contributes to a deeper understanding of the issues in the neighborhoods of the municipality, especially in relation to climatic events. By standing at the front, volunteers directly suffer the effects of flooding, which makes them able to have a unique and valuable look at the needs of the community.

In view of the above, it is also possible to analyze the relevance of volunteering for the understanding of the existing problems in the neighborhoods of the municipality with regard to the climatic events mentioned above.

Thus, from the community communication, it was observed that volunteering registered occurrences in most of the neighborhoods, either by direct connection to the network, or by information from third parties, family members or acquaintances of any nature.

It is also worth mentioning that the municipality of Nova Iguaçu has local peculiarities, whether of a social nature, or even material in the morphological sense, or better said, geomorphological, being susceptible to accidents due to floods. The Municipality is located, in the first observation, in the middle of two alkaline complexes, one referring to the alkaline complex of the "Serra do Mendanha" and the other in the Tinguá Biological Reserve, an integral component of the Serra do Mar that extends along a considerable part of the Brazilian coast.

In addition, the hot and humid climate favors intense rainfall, directly interfering in the occupation-risk relationship, especially because a large part of the territorial occupation is distributed along the drainage of water bodies, which are present throughout the administrative territory, increasing the vulnerability of this population.

Emphasizing this issue, we put another not so uncommon peculiarity, referring to the floodplains, which, in the past historical moment of the Municipality, allowed it to be an area suitable for cultivation, so much so that a fruit such as the orange became a form of representation of the place, based on a past of the city where it was even known as the "perfume city".

After this agricultural cycle, the city was recognized with a new nomenclature: "Dormitory City", as it began to house a large part of the working class of the state of Guanabara. However, it



is not of interest at the moment to discuss historicity in such a direct way, but its historical pair is fundamental for the understanding of the relations that are made in the present, in the face of the materiality of the objects that are placed in front of the relations that are based on it.

It is also relevant to bring up that the municipality of Nova Iguaçu is a watershed of watersheds, and even though the majority of the competing portion of the Guanabara Hydrographic Basin is more present in the territory, part of the Guandu Basin also marks its presence.

Considering the Geographic Space as a factor and condition for the reproduction of living conditions, the Hydrographic Basins stand out in our analysis, because the Municipality studied is a municipality that suffers recurrently from intense rains and, consequently, from floods, floods and flash floods, especially in the neighborhoods that are cut by the main River of the Region, the "Rio Botas" and its tributaries, whose drainage converges to this main river.

Another situation to be highlighted is landslides and mass movements, which occur less frequently, but no less catastrophic and important for the preparation and response plans of the civil defense and for the management of the territory. In this area, it is appropriate to return to the discussion about the relationship "occupation X risk", due to the perception of the effective occupation of these unsuitable areas, which are, however, the product of a historical disorderly occupation process and that precedes the elaboration of this article, so that what is put on the agenda are the forms of training, communication, structuring and organization of this same territory, in order to contemplate better forms of prevention and responses, such as the mitigation of the impacts of the phenomena.

## 5 CONCLUSIONS

The survey revealed the relevance of trained volunteering as an important link between the Civil Protection and Defense Agency and communities affected by disasters, in the face of floods, floods and forest fires, which are the most challenging events in the researched territory. The training tool, combined with the close connection with the NUPDECs, proved to be effective in supporting the response, decision-making, and the allocation of resources to the places affected by accidents and disasters, thus minimizing their negative impacts.

The technical training of volunteers, offered by initiatives such as the Civil Defense Training Center (CETRED), as conceived by the Civil Defense Secretariat of Nova Iguaçu, prepares agents to multiply information and guidance for the communities. This acquired experience is the true answer to the problem question of the research, as trained people will act as local leaders, directly supporting civil protection and defense actions, promoting the safety and



well-being of the population, reducing social vulnerability and making it more resilient to adverse events as a whole, these are the advantages that the research sought to show.

Despite having faced some difficulties, the positive results achieved prove its relevance. The advantages lie in the benefits arising from the agility in the response and in the restoration of social normality, that is, minimizing the damage and accelerating the recovery of the affected areas.

Therefore, by investing in volunteer training and promoting cooperation between different sectors, the Civil Defense of Nova Iguaçu contributes to a safer future. Information, organization and joint action make it possible to face the challenges imposed by accidents and disasters in more efficient and effective ways, protecting lives and property.



## REFERENCES

BRASIL. LEI Nº 9.985 DE 18 DE JULHO DE 2000. institui o Sistema Nacional de Unidades de Conservação da Natureza e dá outras providências. Disponível em: [https://www.planalto.gov.br/ccivil\\_03/leis/19985.htm](https://www.planalto.gov.br/ccivil_03/leis/19985.htm). Acesso em: 28 fev. 2024.

BRASIL. Ministério do Desenvolvimento Regional. PORTARIA Nº 260, DE 02 DE FEVEREIRO DE 2022. Estabelece procedimentos e critérios para o reconhecimento federal e para a declaração de situação de emergência ou estado de calamidade pública pelos Municípios, Estados e Distrito Federal. Disponível em: <https://www.in.gov.br/en/web/dou/-/portaria-n-260-de-2-de-fevereiro-de-2022-378040321>. Acesso em: 28 fev. 2024.

BRASIL. Resolução nº 2 do Conselho Nacional de Defesa Civil, de 02 jan 1995. Diário Oficial da União: seção 1, Brasília, DF, nº1, p. 82-86. 02 jan 1995.

BRASIL. Lei Nº 9.608, de 18 de fevereiro de 1998. Dispõe sobre o serviço voluntário e dá outras providências. Brasília, DF, fev. 1998. Disponível em: [http://www.planalto.gov.br/ccivil\\_03/LEIS/L9608.htm](http://www.planalto.gov.br/ccivil_03/LEIS/L9608.htm). Acesso em: 20 fev. 2024.

BRASIL. DECRETO Nº 5.376 de 17 de fevereiro de 2005. Dispõe sobre o Sistema Nacional de Defesa Civil -SINDEC e o Conselho Nacional de Defesa Civil, e dá outras providências. Brasília, DF, fev. 2005. Disponível em: [https://www.planalto.gov.br/ccivil\\_03/\\_ato2004-2006/2005/decreto/d5376.htm](https://www.planalto.gov.br/ccivil_03/_ato2004-2006/2005/decreto/d5376.htm). Acesso em: 20 fev. 2024.

BRASIL. Política Nacional de Proteção e Defesa Civil. Lei 12.608, de 11 de abril de 2012. Institui a Política Nacional de Proteção e Defesa Civil, dispõe sobre o SINPDEC, e o COMPDEC; autoriza a criação de sistema de informações e monitoramento de desastres e dá outras providências. Disponível em: [http://www.planalto.gov.br/ccivil\\_03/\\_ato2011-2014/2012/lei/l12608.htm](http://www.planalto.gov.br/ccivil_03/_ato2011-2014/2012/lei/l12608.htm). Acesso em: 20 fev. 2024.

BRASIL. LEI Nº 14.750, DE 12 DE DEZEMBRO DE 2023 [https://www.planalto.gov.br/ccivil\\_03/\\_ato2023-2026/2023/lei/l14750.htm/](https://www.planalto.gov.br/ccivil_03/_ato2023-2026/2023/lei/l14750.htm/) Acesso em 08 mar. 2024.

BRASIL. Ministério da Integração Nacional. Defesa Civil Nacional. Projeto Boas Práticas. Disponível em: [https://www.gov.br/mdr/pt-br/assuntos/protacao-e-defesa-civil/boas-praticas/006\\_boaspraticas\\_iniciativacomunidades\\_comunidades\\_resilientes\\_nova\\_iguacu\\_rj\\_fev2022.pdf](https://www.gov.br/mdr/pt-br/assuntos/protacao-e-defesa-civil/boas-praticas/006_boaspraticas_iniciativacomunidades_comunidades_resilientes_nova_iguacu_rj_fev2022.pdf) /Acesso em 01 de mar. 2024

CETRED. Voluntários passam por treinamento de prevenção e combate a incêndios florestais em Nova Iguaçu. Portal da Prefeitura da Cidade de Nova Iguaçu, 2023. Disponível em: <https://www.novaiguacu.rj.gov.br/2023/06/16/voluntarios-passam-por-treinamento-de-prevencao-e-combate-a-incendios-florestais-em-nova-iguacu/>. Acesso em 01 de mar. 2024.

MAPBIOMAS. Coleção 8 da Série Anual de Mapas de Cobertura e Uso da Terra do Brasil, acessado em 03 mar. 2024 através do link: [https://plataforma.brasil.mapbiomas.org/cobertura?activeBaseMap=2&layersOpacity=100&activeModule=coverage&activeModuleContent=coverage%3Acoverage\\_main](https://plataforma.brasil.mapbiomas.org/cobertura?activeBaseMap=2&layersOpacity=100&activeModule=coverage&activeModuleContent=coverage%3Acoverage_main)



&activeYear=2022&mapPosition=-22.695750%2C-43.519083%2C11&timelineLimitsRange=1985%2C2022&baseParams[territoryType]=4&baseParams[territory]=3259&baseParams[territories]=3259%3B3303500%20-%20Nova%20Igua%C3%A7u%20%28RJ%29%3B4%3BMunic%C3%ADpio%3B-22.8652765969999%3B-43.6737686559999%3B-22.52601248%3B-43.3643969149999&baseParams[activeClassTreeOptionValue]=default&baseParams[activeClassTreeNodeIds]=1%2C7%2C8%2C9%2C10%2C11%2C2%2C12%2C13%2C14%2C15%2C16%2C17%2C3%2C18%2C19%2C28%2C30%2C31%2C32%2C33%2C34%2C29%2C35%2C36%2C37%2C38%2C20%2C21%2C4%2C22%2C23%2C24%2C25%2C5%2C26%2C27%2C6&baseParams[activeSubmodule]=coverage\_main&baseParams[yearRange]=1985-2022

BGE – INSTITUTO BRASILEIRO DE GEOGRAFIA E ESTATÍSTICA. Censo Brasileiro de 2010. Rio de Janeiro: IBGE, 2022. Acesso em 29 abr. 2024, pelo link: <https://www.ibge.gov.br/cidades-e-estados/rj/nova-iguacu.html>

REDE BRAVO/SVAC. Rede de voluntários, criada em 2010. <https://www.sistematica.info/redebravo>. Acesso em 08 mar. 2024

REIS, F. Orientador: Airton Bodstein de Barros. 2022. Voluntários em Núcleo de Defesa Civil Municipal - NUDEC: Proposta de Verificação de Eficácia na Formação. Dissertação (Mestrado). Mestrado em Defesa e Segurança Civil. Universidade Federal Fluminense. Niterói, 2021.

RIO DE JANEIRO. Decreto estadual Nº 46.935 de fevereiro de 2020, Institui a Política Estadual de Proteção e Defesa Civil- PEPDEC. <http://www.defesacivil.rj.gov.br/images/biblioteca/POLITICA-ESTADUAL-DE-PROTECAO-E-DEFESA-CIVIL.pdf>

YIN, R. K. Estudo de Caso - 5.Ed.: Planejamento e Métodos. [S. l.]: Bookman Editora, 2015.